



GIFU

The Heartland of Japan



Gifu Prefecture



Official Tourism Website : <http://travel.kankou-gifu.jp/en/>
Blog : <http://gifucrossroads.wordpress.com/>
Facebook Page : "Gifu Crossroads"

Welcome to GIFU: The Heartland of Japan

Discover the soul of Japan in Gifu Prefecture.

Gifu is home to a living culture, which thrives amongst the majesty of nature and pristine water. Traditions of old are passed on with the changing seasons, giving life to a rich heritage of craftsmanship.

Tradition



World Heritage Site



Crafts



History



Food



Hot Springs



Nature



Festivals



12 Mino Washi Japanese Paper **Crafts**

Mino Washi Japanese paper has a proud tradition of more than 1,300 years and is made using a characteristic *nagashituki* method that allows the beautiful paper to come out thin yet durable like cloth. Mino Washi paper is used in traditional craftwork such as Gifu Japanese umbrellas and Gifu lanterns, and is designated an Intangible Cultural Heritage by UNESCO.



13 Old Streets of Mino **History**

The flavor of the Edo Period (17th – 19th century) remains alive in these streets, with their traditional architecture and embellished *udatsu* firewalls. The Mino Washi "Akari" Art Exhibition of Japanese paper sculptures is held in October of each year. These works on display are contributed from all over the country, and their soft, delicate light illuminates the streets, creating a dream-like atmosphere.

14 Seki Traditional Swordsmith Museum **Crafts**

Blades have been produced in Seki City for nearly 700 years. The high quality products, which include katana (Japanese swords), kitchen knives, scissors, nail clippers and more, are famous even overseas. The methods used in making traditional katana are on display at the Seki Traditional Swordsmith Museum.



15 Gujo Odori Dance Festival **Tradition**

The Gujo *Odori* is counted as one of the three most famous folk dances in Japan. The *retsuya-odori*, or "all-night dance," held each year August 13th – 16th sees tens of thousands of people gather from all around Japan to dance the whole night through.

16 Lifelike Food Replicas **Activities**

Enjoy the experience of making wax-based food replicas, such as tempura and lettuce, that look just like the real thing! Gujo City is the birthplace of these replicas often displayed in restaurant storefronts, and products made here are sold all over Japan.



17 Winter Sports in Gujo **Activities**

At the many ski slopes in Gujo one can take part in winter sports such as sledding, banana boating, and rafting.



18 Takayama Jinya **History**

This facility was used as a government office during the Edo Period (17th – 19th century). Today, it is the only remaining facility of its kind.



19 World Heritage Site Shirakawa-go **World Heritage**

110 folk houses with roofs thatched in the *gassho*, or "praying hands," style stand in this quiet mountain village community. Shirakawa-go is a registered UNESCO World Heritage Site.



20 Hida Shunkei Lacquer Ware **Crafts**

Clear lacquer is applied to wood to bring out the natural beauty of the grain.



21 Hida Beef **Food**

Hida brand beef is succulent and melts in your mouth. Try it as steak, sushi, Japanese hotpot, or a number of other ways in which it is guaranteed to satisfy your taste buds!

22 Furukawa Festival **Festivals**

The Furukawa Festival proclaims the arrival of spring to the Hida region and is one of the three largest festivals of its kind in Japan. A crowd of energetic, bare-chested men parade to the beat of large *taiko* drums.



Hida 飛騨 Northern GIFU

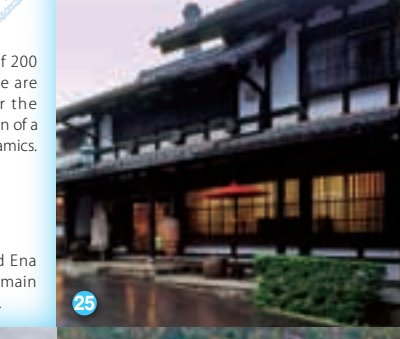
23 Mino Yaki Ceramic Ware **Activities**

Mino's pottery has a history of over 400 years and was developed in this region, which includes the cities of Tajimi, Toki, and Mizunami. This area currently boasts over a 60% share of ceramic ware production nationally. Visit the many galleries and exhibitions and even create your own pottery piece.



24 Kobei-gama Workshop **Crafts**

This ceramics studio has a history of 200 years, and the works produced here are representative of Mino *Yaki*. Tour the exhibition hall, which is a reconstruction of a traditional folk house, and shop for ceramics.



25 Kurikinton **Food**

The mountain cities of Nakatsugawa and Ena produce *kurii*, or chestnuts, which are the main ingredient in this traditional autumn sweet.



26 Ena Valley **Nature**

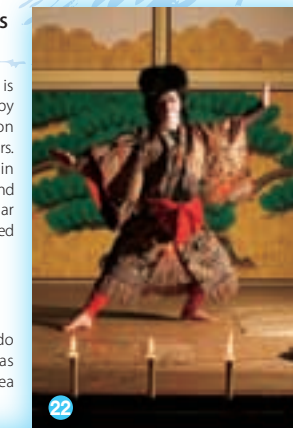
Ena Valley is a man-made lake formed by the construction of the Oi Dam. Sightseeing boats cruise upon its waters, showing visitors the magnificent rock formations that line the valley's banks, as well as seasonal attractions such as cherry blossoms in spring and changing leaves in autumn.



Mino 美濃 Southern GIFU

27 Ji-kabuki and Playhouses **Tradition**

Referring to a variety of kabuki that is performed not by professionals but by local amateurs, *ji-kabuki* is a tradition that has continued for hundreds of years. Many *ji-kabuki* playhouses remain in the eastern region of Gifu Prefecture, and the plays and choreography particular to this practice continue to be protected and passed down by the locals.



28 Magome-juku (Nakasendo) **History**

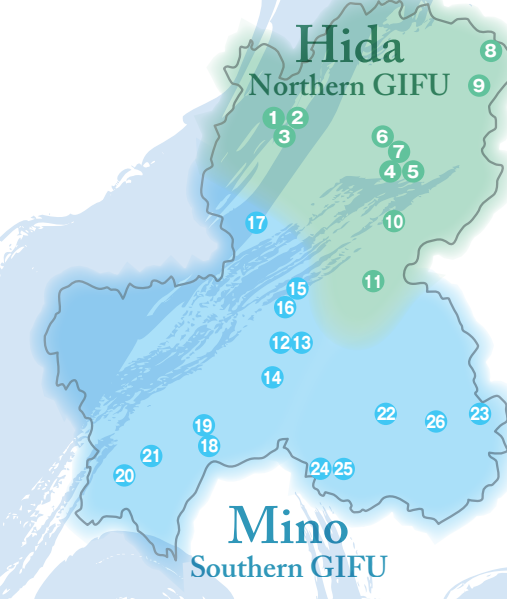
This post town once thrived along the Nakasendo, a road that connected Edo (Tokyo) and Kyoto during the Edo Period (17th – 19th century). The area has been beautifully restored and the cobblestone streets, latticed storefronts, tea houses, and gift shops bring one back to a time long ago.



GIFU Sightseeing Spots

Uncover, Rediscover – Experience Gifu

Gifu's central location means easy access from anywhere in the nation. As a central crossroads of east and west Japan, Gifu boasts a unique history and diverse culture, which has been fostered by the prefecture's rich yet diverse natural terrain. Gifu Prefecture is truly a place that brings together the greatness of Japan.



Sample Itineraries

Located in the center of Japan between Tokyo and Osaka, Gifu Prefecture has an extensive transportation network including railroads and highways. The region boasts easy access to Tokyo, Kyoto, Osaka, surrounding prefectures and tourist areas.

H ... Overnight Stay

Tour A Walk the 5th Station at Mt. Fuji, try delicious marbled beef and visit the Old Quarter of Hida Takayama.

5 Nights 6 Days

Haneda Airport → Tokyo → Tokyo Disneyland **H** → Mt. Fuji (5th Station) → Lake Kawaguchi **H** → National Treasure Matsumoto Castle → Shinhotaka Ropeway → Okuhida Hot Spring Villages **H**

World Heritage Site Shirakawa-go → Hida Takayama (Old Quarter and Hida beef) **H** → Gujo Hachiman (Food replica-making) → Cormorant Fishing on the Nagara River **H** → Nagoya → Central Japan International Airport

Tour B Experience nature and traditional crafts in central Japan.

4 Nights 5 Days

Kansai International Airport → Kyoto **H** → Kanazawa (Kenroku-en Garden) **H** → World Heritage Site Shirakawa-go → Hida Takayama (Hida beef) **H**

Hida Takayama (Morning Market) → Mino (Japanese paper-making) → Tajimi (Pottery-making) → Nagaragawa Hot Spring & Cormorant Fishing **H** → Central Japan International Airport

Tour C Bask in the wonders of the great outdoors and the rejuvenating power of hot springs.

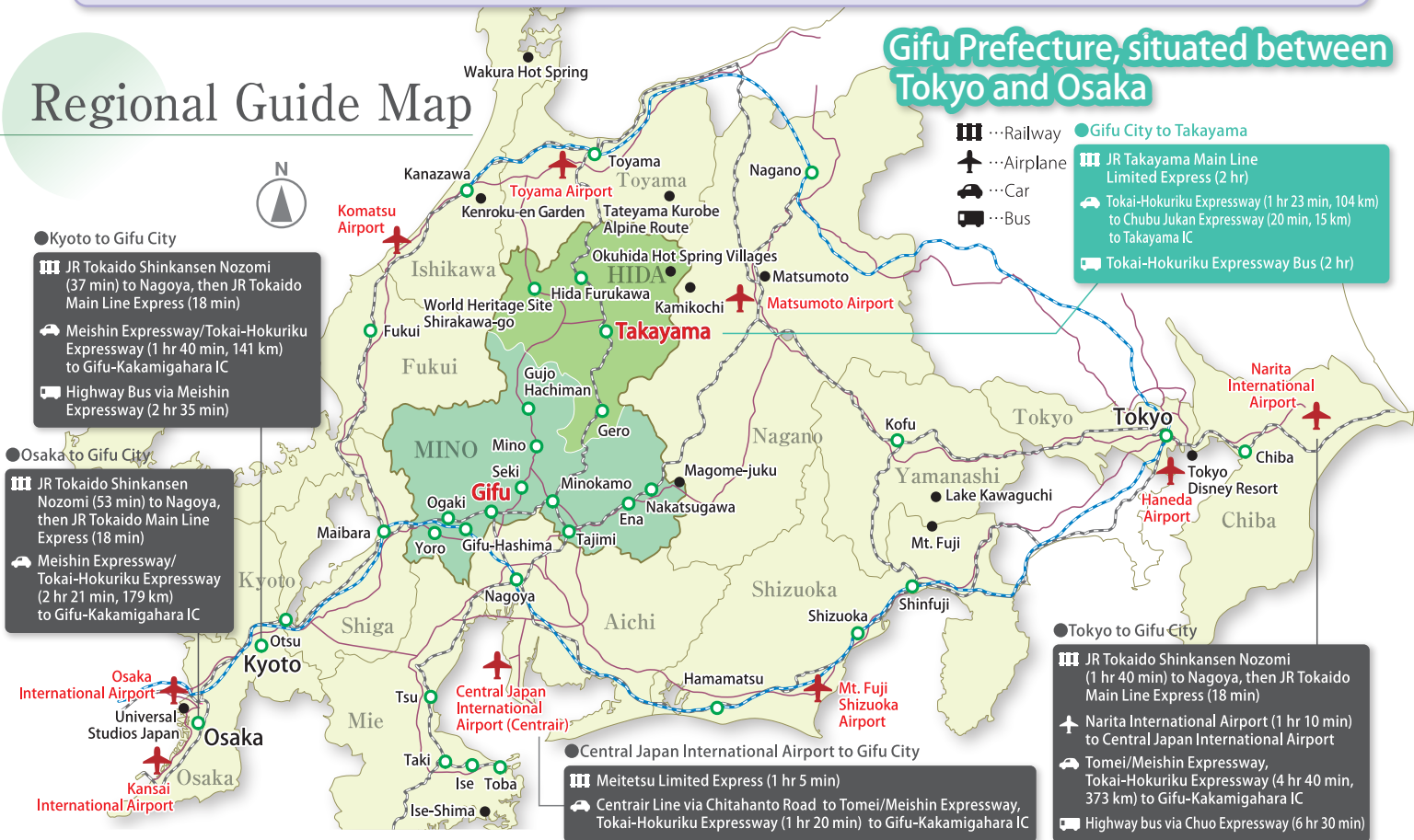
5 Nights 6 Days

Kansai International Airport → Osaka **H** → Magome-juku → Gero Hot Spring **H** → Osaka Falls → Unazuki Hot Springs **H** → Tokyo **H** → Narita International Airport

Hida Takayama **H** → Tateyama Kurobe Alpine Route

Regional Guide Map

Gifu Prefecture, situated between Tokyo and Osaka



Contact

● Gifu Prefecture Tourism Federation

Gifu Prefecture Shinkutanku-chosha 4F, 5-14-12 Yabutaminami, Gifu City, Gifu 500-8384 Japan Phone: 058-275-1480 (9 am ~ 5 pm)
 Closed: Weekends, holidays, New Year's holiday season

● Gifu Prefectural Government, Tokyo Branch Office

Prefectural Center 14F, 2-6-3 Hirakawa-cho, Chiyoda-ku, Tokyo 102-0093 Japan Phone: 03-5212-9020 (8:45 am ~ 5:30 pm)
 Closed: Weekends, holidays, New Year's holiday season

● Hida-Mino Tourist Nagoya Service Center

Chunichi Building 4F, 4-1-1 Sakae, Naka-ku, Nagoya City, Aichi 460-0008 Japan Phone: 052-261-2001 (9 am ~ 5:45 pm) Closed: Weekends, holidays, New Year's holiday season

● Tourism Promotion Division, Gifu Prefectural Government

2-1-1 Yabutaminami, Gifu City, Gifu 500-8570 Japan Phone: 058-272-1111 (8:30am~5:15pm)
 E-mail: c11335@pref.gifu.lg.jp Closed: Weekends, holidays, New Year's holiday season

※The above telephone numbers are listed in the form appropriate for domestic dialing. To call from abroad, dial the International Direct Dialing Number of your country, then "81" (Japan's country code), and finally the telephone number excluding the initial "0".