



## Ninja's hometown is here!

Don't you have stereotypes about ninjas, which you see in animations or comics? Actually, real ninjas were different from what you imagine. Step into a town that is known to have one of the two famous hometowns for ninjas, Koka (Koga). The other famous place for ninjas is Iga. Put on ninja outfits and throw "Shurikens" (throwing stars), scale a wall, conceal yourself behind objects, cross the pond and feel yourself transform completely into a Ninja. You can have a chance to become a Ninjutsu expert in Koka, the ninja's hometown.

**Koka Ninja Village**  
 ADDRESS: 394 Oki, Koka-cho, Koka City  
 ACCESS: From JR Koka Sta., pick-up bus available  
 PHONE: 0748-88-5000  
 URL: <http://koka.ninpou.jp/>





**Shigaraki Kenzo Toubou  
(Shigaraki Pottery Studio)**

**ADDRESS:** 755-1 Nagano, Shigaraki-cho, Koka City  
**ACCESS:** From Shigaraki Kougen Railway Shigaraki Sta., 19min on foot  
**PHONE:** 0748-82-2216  
**URL:** <http://www.ogawa-kenzo.com/>

Have you enjoyed dining or drinking from something you created with your own hands? Kenzo Ogawa is one of the Shigaraki Pottery craftsmen in Shigaraki. You can make pottery and get in touch with the warmth of the earth and what it means to make pottery. Concentration of the mind in a quiet room allows you to focus and clear your head.

The day-guest's experience lasts about two hours, but you can of course continue to enjoy Shigaraki Pottery and the beautiful natural scenes of Shigaraki for a few days. Also, take some time to enjoy the works of Kenzo Ogawa and enjoy the town of Shigaraki at the same time. Be immersed in the world of Shigaraki Pottery and the world of Kenzo Ogawa. (Usually appointments are required.)

In case you don't have very much time, you can enjoy "Ezuke", pottery painting at Shigaraki Tougeimura.

## Feel the sensitivity of the man



## Samurai Spirit

Here is your chance to step into the shoes of a samurai and experience the cultural heritage of Japan. Samurai Kembu is the traditional performing art with a Japanese sword and a Japanese holding fan. In feudal times, samurais

performed with their swords and fans to give themselves courage or to achieve mental concentration.

There are three courses that you can go through. It is a chance to become a SAMURAI for a while.

**Seiga Samurai Kembu**

**ADDRESS:** 1-4-6 Asahigaoka, Otsu City  
**ACCESS:** From JR Otsu Sta., 6min on foot  
**PHONE:** 077-522-5621  
**URL:** <http://www.samurai-kembu.jp/>



## Surrounding the warmth

When you go to Hino-cho and places like it, you can escape from a busy, stressful life by sitting in a happy circle with a warm family.

It's more than an experience; you will be a member of its family doing rice planting, harvesting, cooking and more.

Generally, they do educational trips for children to develop an understanding for farm life and the warmth of people.

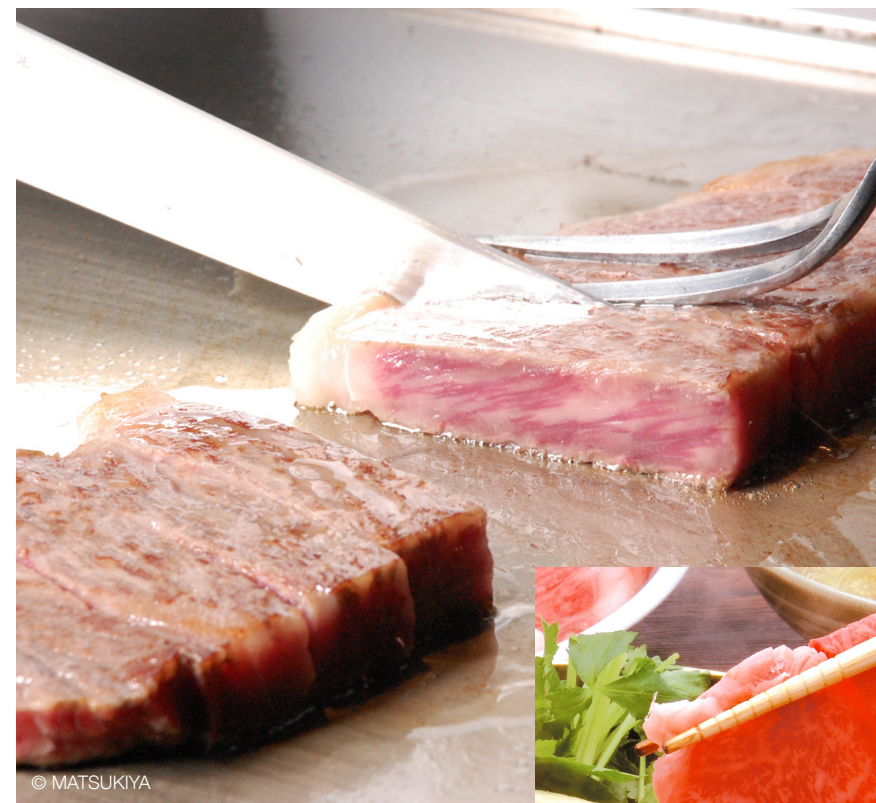
Appointments must be made through a travel agent. Isn't it good to relax leisurely and feel the warmth of people once in a while?

**Sanpou Yoshi!  
Omi Hino Homestay Program**

**ADDRESS:** 1-1 Kawara, Hino-cho, Gamo-gun  
**ACCESS:** From Ohmi Railway Hino Sta., 10min by bus  
 (get off at "Hinocho Yakuba" or "Yokomachi")  
**PHONE:** 0748-52-6562  
**URL:** <http://www.omi-hino.jp/>



写真提供 (左視線)：富山県高岡市伏木上町花山車保存会、京都糖研 前田好雄



© MATSUKIYA



© SENNARITEI

TRADITIONAL CRAFTS 

## Masterpiece of craftsmanship handed down with Biwako

There is a long history of handicrafts originating in Shiga Prefecture that are connected with the life of Biwako and its people.

Shiga is a “prefecture of manufacturing” where people make handicrafts utilizing

traditional techniques, some even using Shiga’s natural resources.

You can take a look at, and purchase, the handicrafts at the “Shiga Product Tourism Information Center” at JR Otsu Station, at various “Road Stations”

(rest areas with shops), and at hotels in Shiga.

Take them in your hands and you will notice the warmth and charm of the handicrafts made beside Biwako.

FOOD 

## Omi Beef - The finest beef

Mountains on all sides surround Omi, the historical name for Shiga Prefecture, and many clear streams flow to Omi through ravines.

The beef is characterized by its aroma, tenderness, and marbling. These characteristics come from the clear water and nutritious feed. It is historically, the finest beef and has set

a high standard, and is enjoyed by everyone who has tried it. You will never forget its taste once you have tried your first bite.

It also sets a high standard for safety and is characterized as a fresh, safe, and high quality food. Sanitation is strictly enforced pursuant to “HACCP” guidelines, which are approved

internationally.

These days, Omi Beef is exported overseas to many places, including, Singapore, Thailand and Macau.

Steak is consumed all over the world but many dishes can be enjoyed with different cuts of beef. Have a visit to Shiga and have a taste of the finest beef, Omi Beef.



# Lakeside Resort

## - where only you can enjoy Biwako



The breathtaking view of Biwako from your room makes your trip one to remember. Sparkling Biwako in the morning sun gives you energy in the beginning of the day and the silent Biwako at night will soothe you after your journey.

Otsu is near Kyoto, so if you are in Kyoto, please stop by.

Otsu is just 10 minutes away by train and has many wonderful lakeside resorts. Why don't you have a gorgeous vacation at a lakeside resort? We will treat you well in Shiga Prefecture.





## Feel the air of genuine Traditional Japan

While enjoying a quiet rest on tatami wearing a yukata and eating Japanese food while glancing at a traditional Japanese garden from your room, you can feel the essence of Japan.

When you extend your journey from Osaka or Kyoto to Shiga Prefecture, you can see the special beauty that is Biwako and

the Japanese countryside. If you're in Japan, you should stay at a Japanese style inn and enjoy a truly unique Japanese experience. You're in Japan! So, enjoy all Japan has to offer in Shiga.



## The heart of “Omotenashi”

“Omotenashi” means to provide genuine hospitality for every guest and it is an important part of what it means to be a guest in Japan. How about relaxing in a hot-spring and having a superb “Omotenashi” at Ogoto?

Just 20 minutes from Kyoto a serene life free of worldly cares

awaits. The atmosphere makes it easy to adapt yourself to the surroundings and makes you at home. Welcome to a leisurely, but luxurious life in Shiga Prefecture.